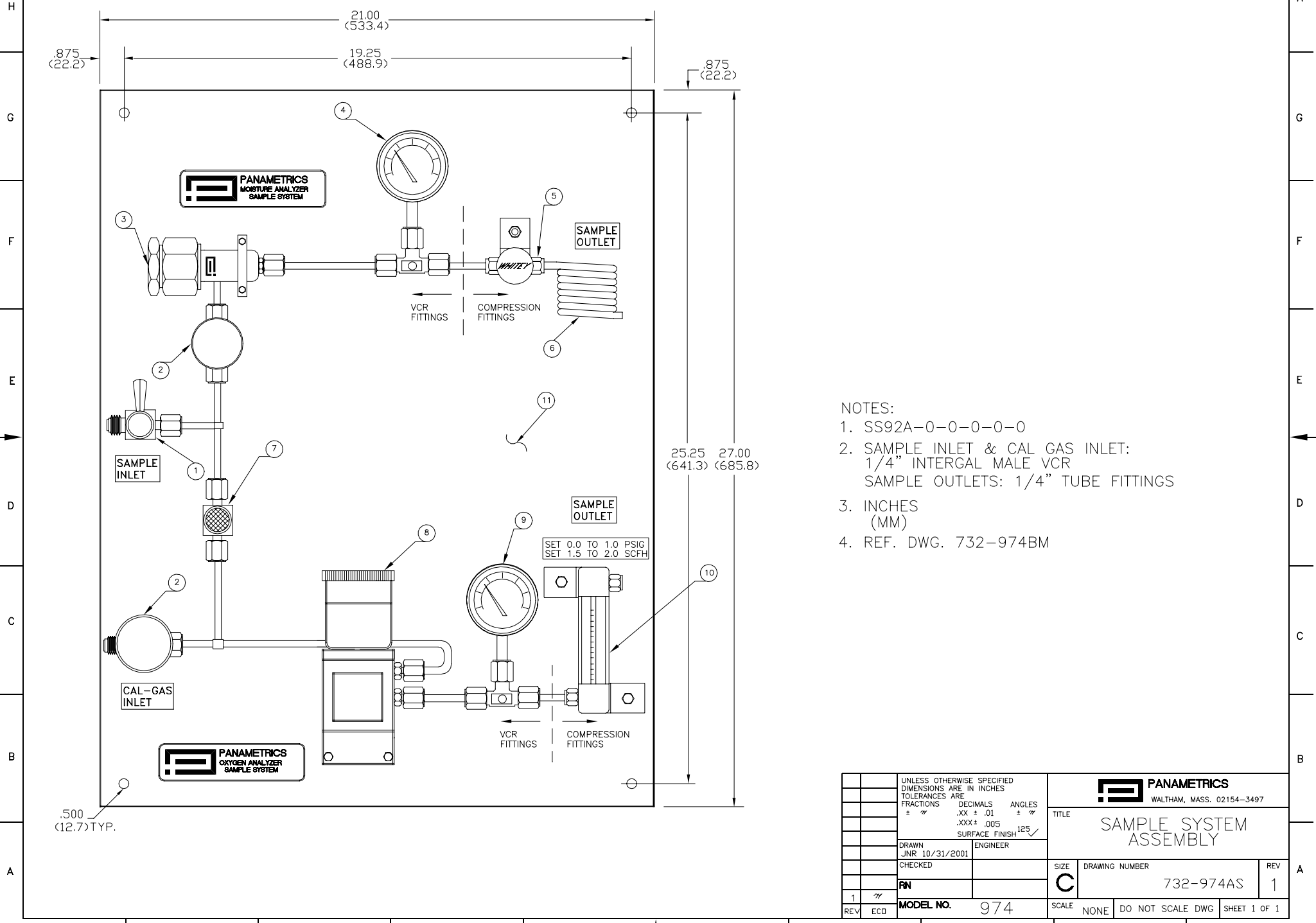


10 9 8 7 6 5 4 3 2 1

REVISIONS					
REV	ECO	DESCRIPTIONS	DWN	CKD	APVD
1	✓	ORIGINATED	JNR		
			10/31/2001		



21.00 (533.4)
19.25 (488.9)
875 (22.2)


25.25 (641.3) 27.00 (685.8)

.500 (12.7) TYP.

- NOTES:
- SS92A-0-0-0-0-0
 - SAMPLE INLET & CAL GAS INLET: 1/4" INTERGAL MALE VCR
SAMPLE OUTLETS: 1/4" TUBE FITTINGS
 - INCHES (MM)
 - REF. DWG. 732-974BM

UNLESS OTHERWISE SPECIFIED DIMENSIONS ARE IN INCHES TOLERANCES ARE FRACTIONS DECIMALS ANGLES ± .005 ± .01 ± .005 SURFACE FINISH 125 ✓		PANAMETRICS WALTHAM, MASS. 02154-3497	
DRAWN JNR 10/31/2001 ENGINEER		TITLE SAMPLE SYSTEM ASSEMBLY	
CHECKED		SIZE	DRAWING NUMBER
RN		C	732-974AS
REV	ECO	MODEL NO.	974
1	✓	SCALE	NONE DO NOT SCALE DWG
			SHEET 1 OF 1

10 9 8 7 6 5 4 3 2 1

 PANAMETRICS WALTHAM, MA 02453		DRAWN	APPROVED	MODEL NO. SS92A-0-0-0-0-0	TITLE UHP MOISTURE AND OXYGEN SAMPLE SYSTEM BILL OF MATERIALS	BM 732-974	REV 1	
		CHECKED	RELEASE NO.			SHEET 1 OF 2		
DWG ITEM	SIZE	PART NO.	DESCRIPTION	NOTE OF REF DESC.	QTY PER ASSY (GP)			
					-01			
1		VO32	VCR DIAPHRAGM VALVE	316 SS, 1/4" INTEGRAL MALE VCR INLET & OUTLET, 3500 PSIG MAX, -100 TO 250F, PACKLESS DIAPHRAGM	1			
2		VO35	VCR BELLOWS REGULATING VALVE	1/4" VCR INTEGRAL MALE INLET & OUTLET, 316 SS, BELLOWS SEALED, 500 PSIG MAX, -40 TO 200 DEG. F	2			
3		2891	VCR MOISTURE PROBE SAMPLE CELL	316 ELECTROPOLISHED SS, 1/4" CAPTURED FEMALE VCR INLET, 1/4" INTEGRAL MALE VCR OUTLET, 1" CAPTURED FEMALE VCR PROBE INLET	1			
4		V135D	VCR PRESSURE GAUGE	2 1/2", 0-200 PSIG, 1/4" CAPTURED FEMALE VCR, 316 SS	1			
5		035	NEEDLE VALVE	316 SS, 1/4" COMPRESSION, 5000 PSIG	1			
6		060	VENTING COIL	1/4" 316 SS TUBE	1			
7		V031	VCR METERING VALVE	700 PSIG MAX, 1/4" INTEGRAL MALE VCR INLET & OUTLET, BELLOWS SEALED FINE METERING VALVE, 316 SS	1			

REV	ECN NO.	DATE/APPD	REV	ECN NO.	DATE/APPD	REV	ECN NO.	DATE/APPD	NOTES
									1. REF. DWG. 732-974
									2. VCR UP TO AND JUST PAST PRESSURE GAUGES.
									3. COMPRESSION FITTINGS DOWNSTREAM OF PRESSURE GAUGES
									4. OXYGEN CELL INSTALLED IN SAMPLE SYSTEM BUT SOLD SEPARTELY

